



Five Wents Pre-school
Memorial Hall, Swanley Lane, Hextable, Swanley, Kent BR8
7LD

Telephone: 07538 561854

Email: info@fivewentspreschool.co.uk

Ofsted URN: EY557273

Newsletter 28, August 2023

Dear Parents/Carers,

Welcome to our termly newsletter, I use this to keep you up to date with our news and forthcoming dates for your diary. I hope that you all had a wonderful summer break.

Please follow our new Facebook page: Five Wents Pre-School for regular updates and photos.

Curriculum

What is our curriculum?

Our **intent** is for our children to be:

Happy

Engaged

Highly focussed

Curious

The way that we **implement** this will vary as each child's experiences and learning will be unique to each unique child. Each child comes to us with different experiences and we build upon these.

We aim to implement this learning based on each child's interests, which are discovered through observations and our strong relationships with parents/carers. We aim to build warm and positive relationships between children and their key worker, alongside a child centred, enabling environment to support and guide each child's experience.

By the time our children leave we hope our **impact** will mean our children will be:

Confident

Resilient

Have an understanding of self regulation

Independent

Creative thinkers
Effective communicators

Health and illnesses

We will continue to follow and update you on any guidance given to us by the Department of Education with regards to Strep A/Scarlet Fever or Covid – 19.

Five Wents Pre-School Drop off and collections

All children will enter through the front door at drop off. A member of our team will be at the door to bring your child into the building, another team member will help your child to hand their belongings in the cloakroom. Parents/Carers will say goodbye at the front door (after initial settling sessions).

At collection time, the Butterfly children (those going to school in September 2024) will leave via the front door and the Caterpillar children (those going to school in September 2025) will be dismissed via the side door into the outside area.

On Monday and Tuesday's all children going home at 12.15pm will be collected via the front door.

Key person and Next steps

I would like to take this opportunity to remind you all that you are welcome to chat to your child's key person at any point, just ask. It can either be at the beginning of sessions or on collection. Your child's key person uses your child's interests and curiosities to engage them, which in turn will ensure they learn and develop. In addition your child's key person will assist your child to meet their next steps. Any evidence of development towards their next steps, are safely stored in the children's folders, which you will receive when they leave us.

On a rotation, your child's key person will complete in depth observations on your child over a week. These observations will be uploaded to Tapestry, alongside photographs of your child's learning and will indicate what they are currently working on with your child. This means that you will receive an in depth report on your child's development three times a year. Focus weeks provide an opportunity for you to ask questions and share celebrations and interests at home.

Tapestry

If your child is new to us, then you should have received an activation link, if you have not or would like me to resend it, please let me know.

We use Tapestry to give you a detailed report on all seven areas of learning (three prime areas for the under 3's) three times a year. The observations your key person will make are over the course of a week, or longer if your child attends fewer days. At the same time as undertaking these detailed observations, your child's key person is assessing them to ensure that they are meeting their developmental milestones, teaching them new skills and developing your child's cultural capital (their personal treasure chest of different experiences). As I'm sure you can appreciate, these observations and assessments are very time consuming. I believe my greatest assets are my staff and that they are best utilised working with your children, rather than writing up daily feedback for each child. Staff will always complete the nappy changing book so you are aware when your child was changed.

I hope that you will enjoy seeing the uploaded observations of your child's focus week. You may also see 'wow moment' observations, so maybe something we have never seen them do before, or of an activity towards their next steps or sometimes of a visitor/special event. If you see your child doing something new or that we do not see at pre-school, you are able to upload your own photos to share them with us. We can then use this evidence towards their next steps, during the early years the partnership between settings and parents is so important. If your link has expired or you require any support, please let me know.

Clothing

I would like to take this opportunity to remind you that your child/ren may get messy at Pre-School, so please do not send them in wearing anything special. We will be using the outdoor area every day, regardless of the weather (unless too dangerous), so please provide your child with a **named** coat, hat and wellies (in a bag) during the winter months ***and a named sun hat and apply sun cream to them before they attend, in the summer months.***

Monday & Tuesday lunchtime

If your child stays for lunch on a Monday or Tuesday, we ask that you provide a **named lunchbox** and **named bottle of water**. We are a nut free setting, so please do not send your child in with food containing nuts/seeds or Nutella in sandwiches. We ask that your child has only water and that they have a healthy balanced lunch. We will leave any sweets given in their lunchbox to take home. If you choose to give your child grapes or sausages, please cut them horizontally and vertically. See the below link for more information:

[Safe Weaning | Choking | Start4Life \(www.nhs.uk\)](https://www.nhs.uk/healthyliving/feedingchildren/feedingtips/safe-feeding/)

Invoicing

If you have to pay fees for your child's sessions, you will be sent a monthly invoice. In accordance with our 'Terms and Conditions', fees are due monthly, in advance. You may pay via cash or bank transfer (please use your child's name as a reference). I email invoices in advance of each month. Please note, our invoicing software takes up to 4 days to show new payments, so you may get a reminder sent if you pay on the invoice due date. If you receive a reminder and have already paid, please ignore the invoice as it will update in a few days time, thank you.

Our fees are as follows:

2 year olds:

£6 per hour = £18 per morning session

£15 per afternoon session

3 and 4 year olds:

£5.50 per hour = £16.50 per morning session

£13.75 per afternoon session

Our bank details are:

Five Wents Pre-School

Natwest

Account number: 51253755

Sort code: 60-21-10

Funding

All children are entitled to 15 hours of funding (Universal), from Kent County Council, the term after their third birthday. Some of you may also be eligible to access 30 hours of funding (Extended), which you can split this between providers. Please see the information below:

<https://www.gov.uk/30-hours-free-childcare>

Funding can be claimed at 3 times during the year: September, January and April. If your child has turned 3 before the 1st September and is now eligible for funded hours, please complete and return the 3/4 year old funding form attached. If your child has previously claimed this funding, I will be asking you to sign your funding form again at the beginning of term.

A child born between:	
1 April - 31 August (inclusive)	The start of term 1 following their third birthday (after summer holidays) until statutory school age.
1 September - 31 December (inclusive)	The start of term 3 following their third birthday (after Christmas/New Year holiday) until statutory school age.
1 January - 31 March (inclusive)	The start of term 5 following their third birthday (after April holiday) until statutory school age.

Some families of 2 year olds may also be entitled to free early education; again this is based on your family circumstances. If you are eligible, please speak to me and give me your code (Please note, I have been advised by Kent county Council that you will need to show me your confirmation email). Attached to this is the '2 Year Old Parent Declaration', this will need to be completed and returned to me in order to claim your funded hours. Please visit here:

<https://www.gov.uk/help-with-childcare-costs/free-childcare-2-year-olds>

You can also pay in Childcare Vouchers from your employer, please email me asap so I can set up an account with the supplier your employer uses. For new users, this system is

changing on 4th October 2018 to Tax-free childcare; I am also signed up to this scheme, please visit here for more information:

<https://www.gov.uk/help-with-childcare-costs/childcare-vouchers>

[Tax-Free Childcare - GOV.UK \(www.gov.uk\)](https://www.gov.uk/tax-free-childcare)

Voluntary Contribution

You will also receive a letter each half term asking you for a voluntary contribution towards consumables and activities. This includes, snacks, sand, mud and craft resources as well as a weekly Music and Movement session on a Tuesday with Simply Lizzie (Usually £3 per session) and a Tiny Tekkers session on a Friday with Concept 4 Football (Usually £3 per session).

The contribution that we suggest is:

£2 per week if your child does not attend on a Tuesday or Friday

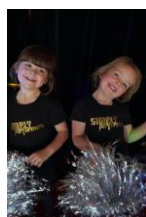
£5 per week if your child attends 1-3 days, including either a Tuesday or a Friday

£8 per week if your child attends 4-5 days, including both Tuesday and Friday

This term is 7 weeks.

We really appreciate your support in this matter and it will enable us to provide a rich learning environment and give the children access to a wide variety of snacks and experiences. The continuation of these additional sessions relies on your voluntary contributions. To pay your voluntary contribution, please use the bank details above and your child's initials and the word contribution, thank you.

Miss Lizzie from Simply Performers will be providing a Music and Movement session every Tuesday 11:30-12pm. The class will include nursery rhymes, songs and props which will not only improve your child's vocabulary, but also help develop their interaction, confidence and social skills. These sessions are high energy, fun and not to be missed...



You can visit the Facebook page: Concept4Football. Sessions will be Friday between 9.30 and 10.30am. Please see the attached brochure for further information on the sessions.



Below are our confirmed term dates for the academic year 2023-2024

Monday 4th September – Friday 20th October – 7 weeks

Monday 30th November – Friday 15th December – 7 weeks

Friday 5th January– Friday 9th February – 5 weeks 1 day

Monday 19th February - Thursday 28th March – 5 weeks 4 days

Monday 15th April – Friday 24th May – 5 weeks 4 days (excluding bank holiday on Monday 6th May)

Monday 3rd June – Friday 19th July – 7 weeks

Late collections

I would like to take this opportunity to politely remind you to collect your children promptly at 12.15pm or 2.30pm on Tuesdays. We reserve the right to charge for each additional 15 minutes. If you are going to be late please phone and let us know.

If you are going away on a lovely holiday, please ask for a holiday form or email us.

If you would like to ask anything further, please do not hesitate to contact me or speak to a member of staff.

All updated policies and procedures, including our Privacy Notice, can be found on our website www.fivewentspreschool.co.uk or you can find us on Facebook Five Wents Pre-School.

Many thanks,

Sasha and the Five Wents Pre-School Team